

# T estpassport Q&A



---

*Bessere Qualität , bessere Dienstleistungen!*

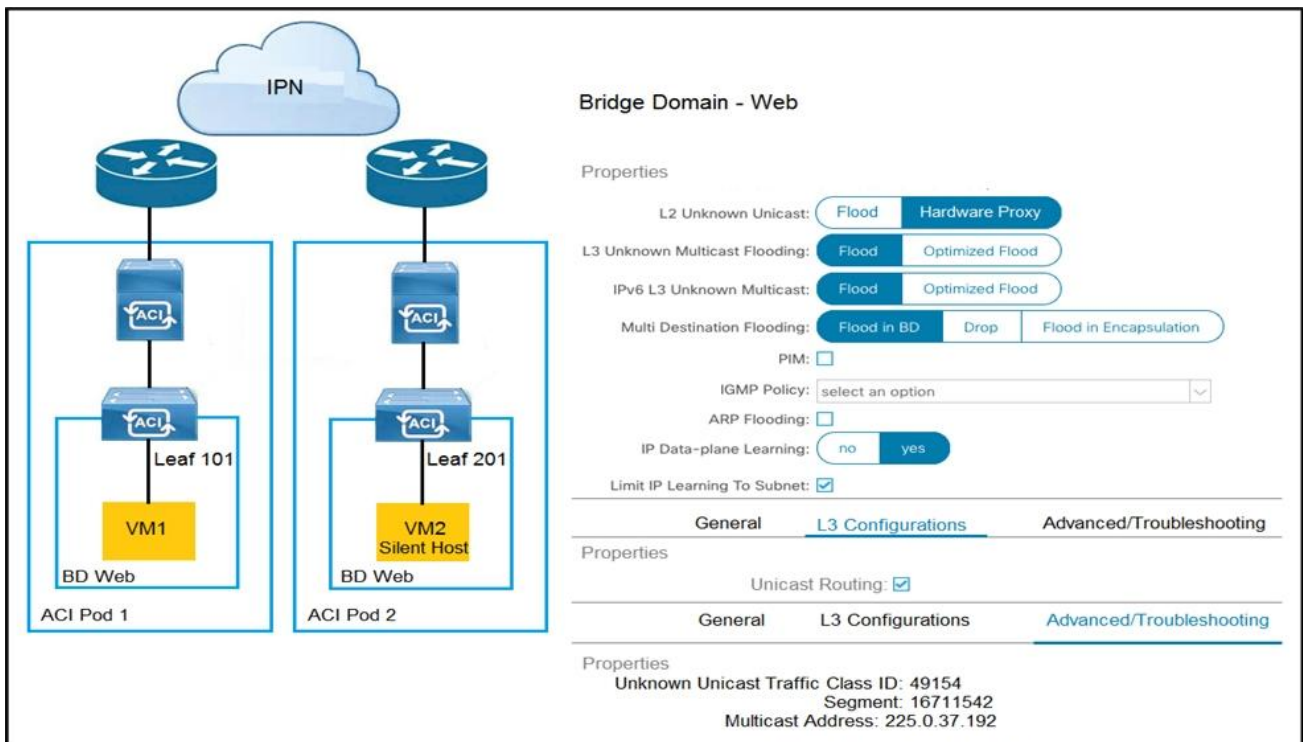
We offer free update service for one year  
[Http://www.testpassport.ch](http://www.testpassport.ch)

**Exam** : **600-660**

**Title** : Implementing Cisco  
Application Centric  
Infrastructure - Advanced  
(DCACIA)

**Version** : DEMO

1.Refer to the exhibit.



How is the ARP request from VM1 forwarded when VM2 is not learned in the Cisco ACI fabric?

- A. Leaf 101 forwards the ARP request to one of the proxy VTEP spines.
- B. POD1 spine responds to the ARP request after the POD1 COOP is updated with the VM2 location.
- C. Leaf 101 encapsulates the ARP request into a multicast packet that is destined to 225.0.37.192.
- D. Leaf 101 switch consumes the ARP reply of VM2 to update the local endpoint table.

**Answer: A**

2.Which approach does Cisco ACI use to achieve multidestination packet forwarding between leaf switches in the same fabric?

- A. Map VXLAN VTEP to the multicast group
- B. Map VXLAN to PIM-SM protocol
- C. Map VXLAN VNI to the multicast group
- D. Map VXLAN to PIM-DM protocol

**Answer: C**

3.What does the VXLAN source port add to the overlay packet forwarding when it uses the hash of Layer 2, Layer 3, and Layer 4 headers of the inner packet?

- A. ECMP
- B. TCP optimization
- C. disabled fragmentation
- D. jumbo frames

**Answer: A**

**Explanation:**

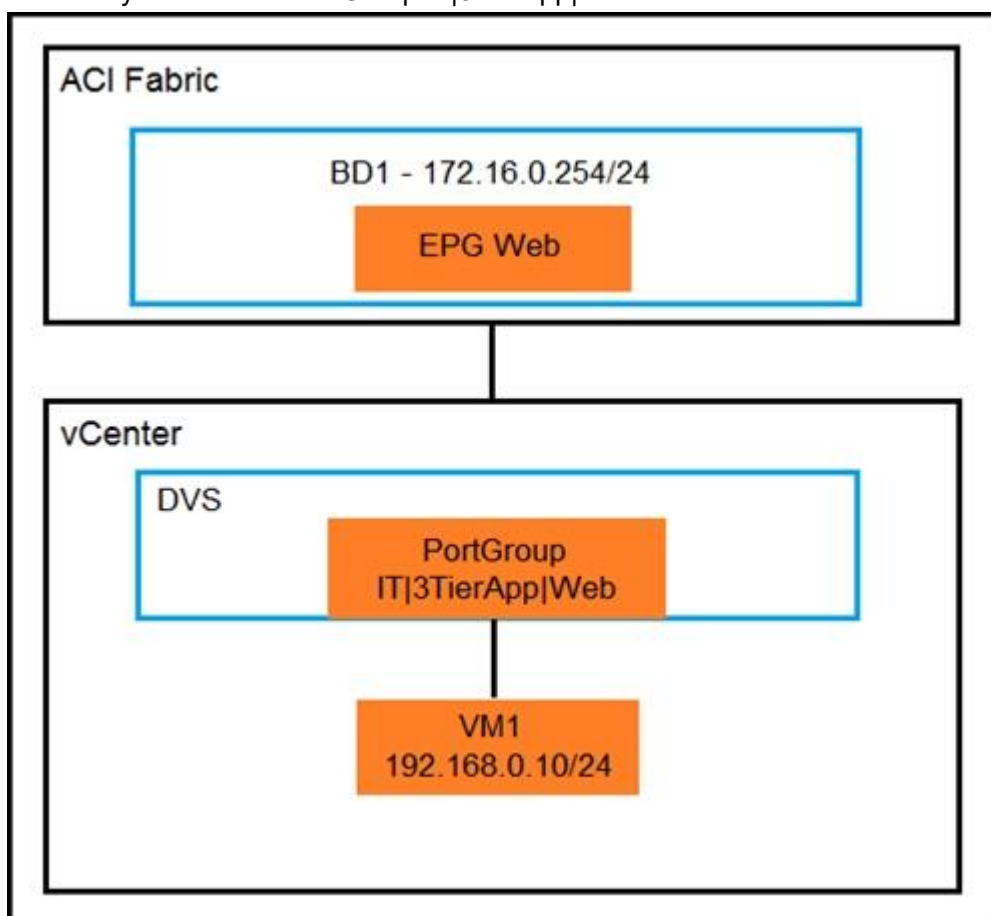
Reference: <https://www.cisco.com/c/en/us/support/docs/lan-switching/vlan/212682-virtual-extensible-lan-and-ethernet-virt.html>

4. Which two actions are the Cisco best practices to configure NIC teaming load balancing for Cisco UCS B-Series blades that are connected to the Cisco ACI leaf switches? (Choose two.)

- A. Create vPC+
- B. Enable LACP active mode
- C. Create PAgP
- D. Create vPC
- E. Enable MAC pinning

**Answer:** BE

5. An organization migrates its virtualized servers from a legacy environment to Cisco ACI. VM1 is incorrectly attached to PortGroup IT|3TierApp|Web.



Which action limits IP address learning in BD1?

- A. Enable Enforce Subnet Check
- B. Enable Rouge Endpoint Control
- C. Enable GARP-based EP Move Detection Mode
- D. Disable Remote EP Learn

**Answer:** C