

# T estpassport Q&A



---

*Bessere Qualität , bessere Dienstleistungen!*

We offer free update service for one year  
[Http://www.testpassport.ch](http://www.testpassport.ch)

**Exam** : **70-741**

**Title** : **Networking with Windows  
Server 2016**

**Version** : **DEMO**

1.Note: This question is part of a series of questions that present the same scenario. Each question in the series contains a unique solution that might meet the stated goals. Some question sets might have more than one correct solution, while others might not have a correct solution.

After you answer a question in this sections, you will NOT be able to return to it. As a result, these questions will not appear in the review screen.

You network contains an Active Directory domain named contoso.com. The domain contains a DHCP server named Server1. All client computers run Windows 10 and are configured as DHCP clients.

Your helpdesk received calls today from users who failed to access the network from their Windows 10 computer.

You open the DHCP console as shown in the exhibit. (Click the Exhibit button.)



You need to ensure that all of the Windows 10 computers can receive a DHCP lease.

Solution: You increase the scope size.

Does this meet the goal?

A. Yes

B. No

**Answer: B**

**Explanation:**

[https://technet.microsoft.com/en-us/library/dd183581\(v=ws.10\).aspx](https://technet.microsoft.com/en-us/library/dd183581(v=ws.10).aspx)

2.Note: This question is part of a series of questions that present the same scenario. Each question in the series contains a unique solution that might meet the stated goals. Some question sets might have more than one correct solution, while others might not have a correct solution.

After you answer a question in this sections, you will NOT be able to return to it. As a result, these questions will not appear in the review screen.

You network contains an Active Directory domain named contoso.com. The domain contains a DHCP server named Server1. All client computers run Windows 10 and are configured as DHCP clients.

Your helpdesk received calls today from users who failed to access the network from their Windows 10

computer.

You open the DHCP console as shown in the exhibit. (Click the Exhibit button.)



You need to ensure that all of the Windows 10 computers can receive a DHCP lease.

Solution: You start the DHCP Server service.

Does this meet the goal?

- A. Yes
- B. No

**Answer: B**

**Explanation:**

[https://technet.microsoft.com/en-us/library/dd183581\(v=ws.10\).aspx](https://technet.microsoft.com/en-us/library/dd183581(v=ws.10).aspx)

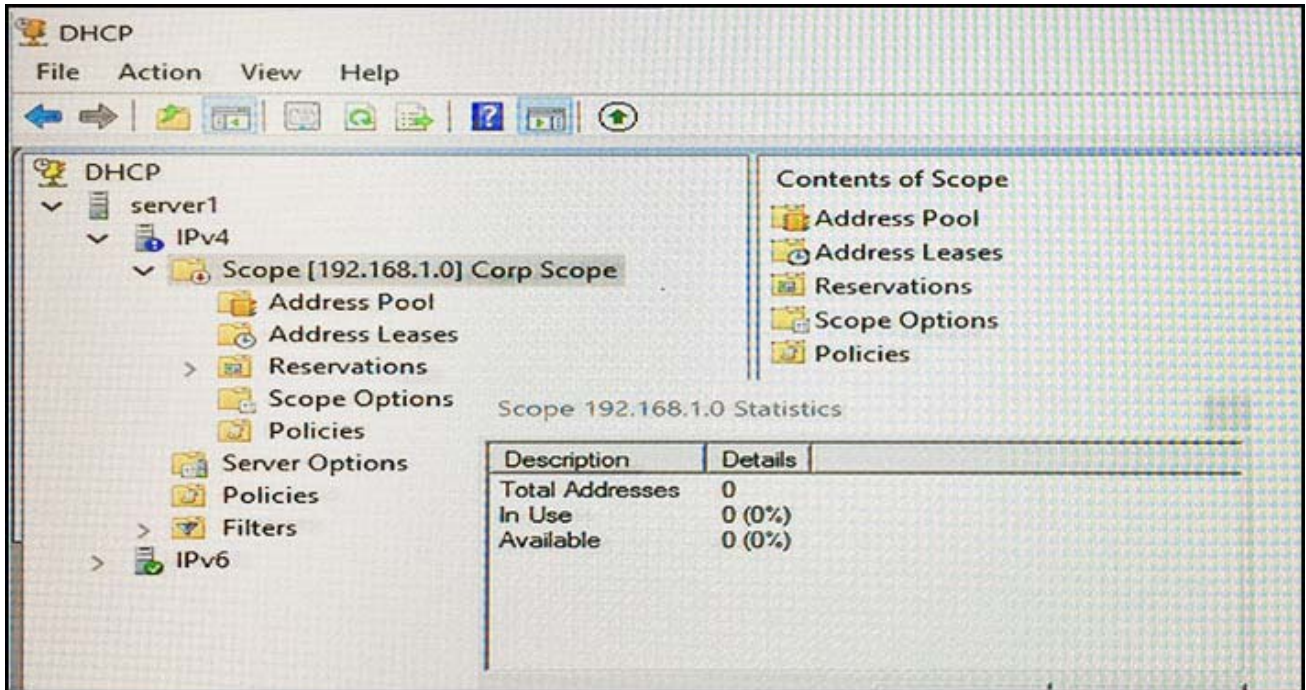
3.Note: This question is part of a series of questions that present the same scenario. Each question in the series contains a unique solution that might meet the stated goals. Some question sets might have more than one correct solution, while others might not have a correct solution.

After you answer a question in this sections, you will NOT be able to return to it. As a result, these questions will not appear in the review screen.

You network contains an Active Directory domain named contoso.com. The domain contains a DHCP server named Server1. All client computers run Windows 10 and are configured as DHCP clients.

Your helpdesk received calls today from users who failed to access the network from their Windows 10 computer.

You open the DHCP console as shown in the exhibit. (Click the Exhibit button.)



You need to ensure that all of the Windows 10 computers can receive a DHCP lease.

Solution: You activate the scope.

Does this meet the goal?

A. Yes

B. No

**Answer: A**

**Explanation:**

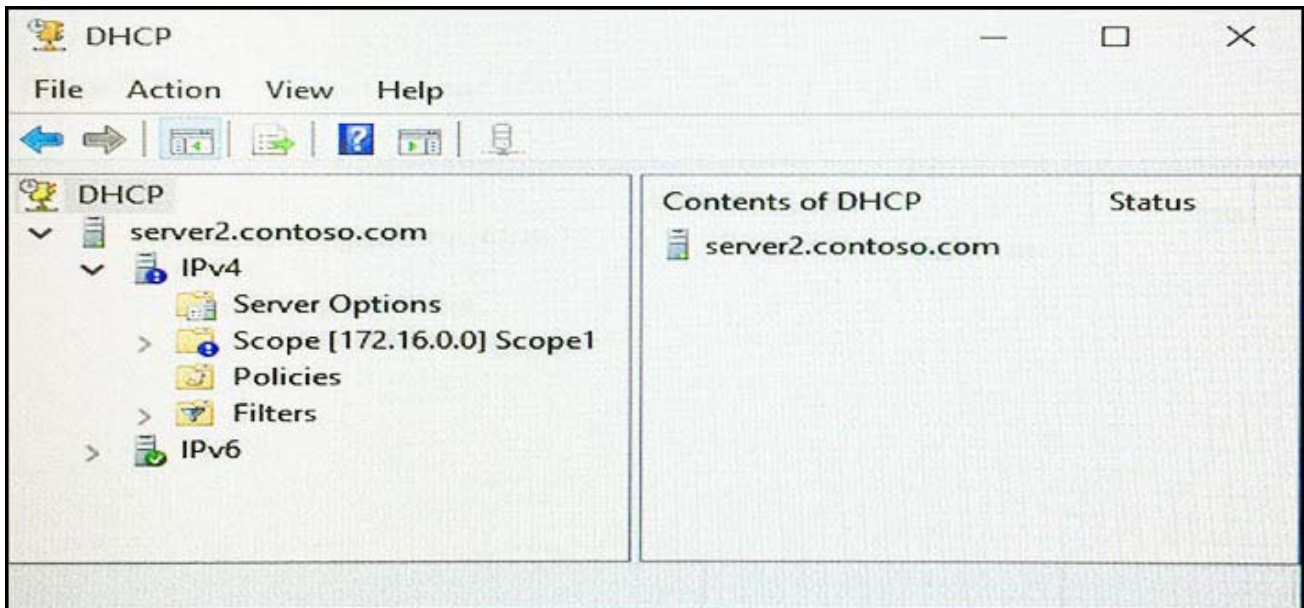
[https://technet.microsoft.com/en-us/library/dd183581\(v=ws.10\).aspx](https://technet.microsoft.com/en-us/library/dd183581(v=ws.10).aspx)

4.Note: This question is part of a series of questions that present the same scenario. Each question in the series contains a unique solution that might meet the stated goals. Some question sets might have more than one correct solution, while others might not have a correct solution.

After you answer a question in this sections, you will NOT be able to return to it. As a result, these questions will not appear in the review screen.

You network contains an Active Directory domain named contoso.com. The domain contains a DHCP server named Server2 than runs Windows Server 2016. Users report that their client computers fail to obtain an IP address.

You open the DHCP console as shown in the Exhibit. (Click the Exhibit button.)



Scope1 has an address range of 172.16.0.10 to 172.16.0.100 and a prefix length of 23 bits.

You need to ensure that all of the client computers on the network can obtain an IP address from Server2.

Solution: You run the Repair-DhcpServerv4IPRecord cmdlet.

Does this meet the goal?

A. Yes

B. No

**Answer: A**

**Explanation:**

<https://technet.microsoft.com/itpro/powershell/windows/dhcp-server/set-dhcpserverv4scope>

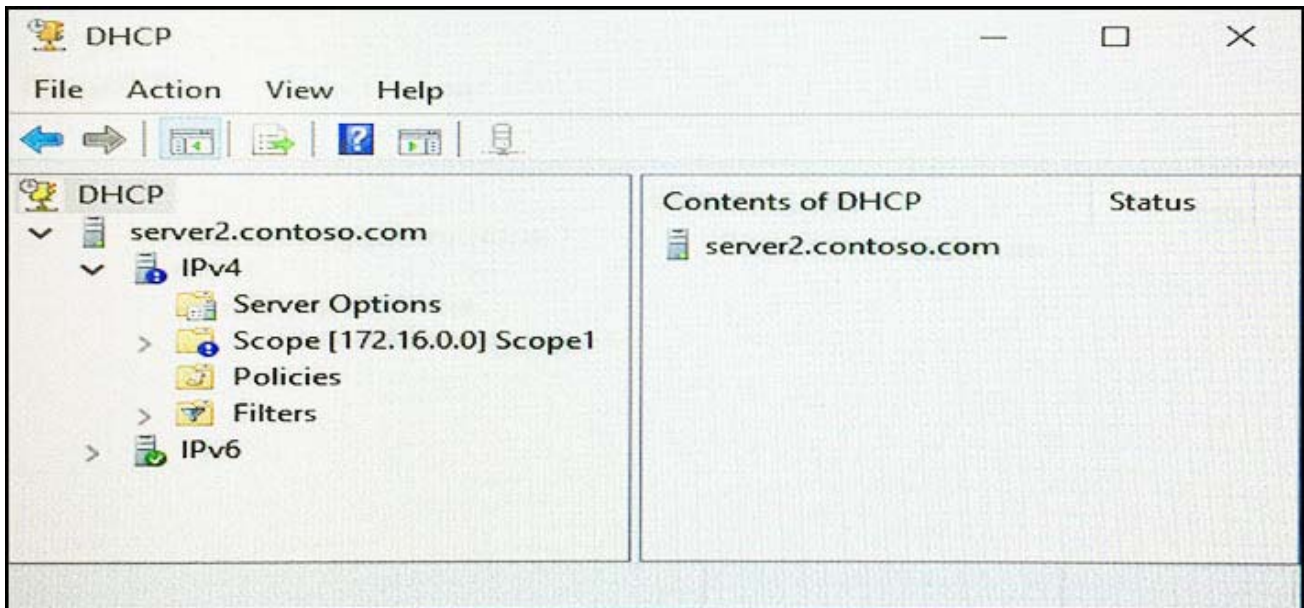
5.Note: This question is part of a series of questions that present the same scenario. Each question in the series contains a unique solution that might meet the stated goals. Some question sets might have more than one correct solution, while others might not have a correct solution.

After you answer a question in this sections, you will NOT be able to return to it. As a result, these questions will not appear in the review screen.

Your network contains an Active Directory domain named contoso.com. The domain contains a DHCP server named Server2 that runs Windows Server 2016.

Users report that their client computers fail to obtain an IP address.

You open the DHCP console as shown in the Exhibit. (Click the Exhibit button.)



Scope1 has an address range of 172.16.0.10 to 172.16.0.100 and a prefix length of 23 bits.

You need to ensure that all of the client computers on the network can obtain an IP address from Server2.

Solution: You run the Reconcile-DhcpServerv4IPRecord cmdlet.

Does this meet the goal?

A. Yes

B. No

**Answer: B**

**Explanation:**

<https://technet.microsoft.com/itpro/powershell/windows/dhcp-server/set-dhcpserverv4scope>