

T estpassportQ&A



Bessere Qualität , bessere Dienstleistungen!

We offer free update service for one year
[Http://www.testpassport.ch](http://www.testpassport.ch)

Exam : HPE6-A80

**Title : Aruba Certified Design
Expert Written Exam**

Version : DEMO

1.A retailer wants to add a wireless network to its stores to provide guest access. The store has wired POS systems which the customer will now replace with wireless systems.

What is one Important security action that the wireless solution supports to comply with PCI DSS?

- A. Use test-practice, factory default settings for security settings and login credentials.
- B. Implement TKIP encryption on the wireless network used by POS devices.
- C. Impose mandatory clean up periods to delete records of user access to controllers
- D. Enforce role-based access control on administrators who access controllers

Answer: A

2.Refer to the exhibit.

Quotation - Composite View			
Quote View			
Quotation Browser			
Views	Filters		
- Composite -			
Site 1			
Line#	Part Number	Description	Manufacturer
1.00	JW736A	Aruba 7205 (US) 2-port 10GBASE-X (SFP+) Controller	Hewlett Packard Enter...
1.01	H3CW3E	Aruba 1Y FC NBD Exch 7205 Controller SVC [for JW736A]	Hewlett Packard Enter...
1.02	JW091A	SFP-10GE-SR 10GBASE-SR SFP+ 850nm Pluggable LC Conn...	Hewlett Packard Enter...
2.00	JL323A	Aruba 2930M 40G 8 Smart Rate PoE+ 1-slot Switch	Hewlett Packard Enter...
2.01	HT6U1E	HPE 3Y FC 4H Exch Aruba2930MSRPOE SVC [for JL323A]	Hewlett Packard Enter...
2.02	JL086A	Aruba X372 54VDC 680W Power Supply	Hewlett Packard Enter...
2.03	JL086A	ABA INCLUDED: Power Cord - U.S. localization	Hewlett Packard Enter...
2.04	JL325A	Aruba 2930 2-port Stacking Module	Hewlett Packard Enter...
2.05	JL083A	Aruba 3810M/2930M 4SFP+ MACsec Module	Hewlett Packard Enter...
2.06	J9150D	Aruba 10G SFP+ LC SR 300m MMF Transceiver	Hewlett Packard Enter...
3.00	J9821A	Aruba 5406R zl2 Switch	Hewlett Packard Enter...
3.01	H1MT0E	HPE 3Y FC 24x7 Aruba 5406R zl2 Switc SVC [for J9821A]	Hewlett Packard Enter...
3.02	U4832E	HPE Networks 54xx/82xx zl Startup SVC [for J9821A]	Hewlett Packard Enter...
3.03	J9828A	Aruba 5400R 700W PoE+ zl2 PSU	Hewlett Packard Enter...
3.04	J9828A	ABA INCLUDED: Power Cord - U.S. localization	Hewlett Packard Enter...
3.05	J9993A	Aruba 8p 1G/10GbE SFP+ v3 zl2 Mod	Hewlett Packard Enter...
3.06	J9150D	Aruba 10G SFP+ LC SR 300m MMF Transceiver	Hewlett Packard Enter...
3.07	J4858D	Aruba 1G SFP LC SX 500m MMF Transceiver	Hewlett Packard Enter...
3.08	J9996A	Aruba 2p 40GbE QSFP+ v3 zl2 Mod	Hewlett Packard Enter...
3.09	JL308A	Aruba 40G QSFP+ LC BiDi 150m MMF 2-strand Transceiver	Hewlett Packard Enter...
4.00	JH234A	HPE X242 40G QSFP+ to QSFP+ 1m DAC Cable	Hewlett Packard Enter...

The network architect has created the 60M shown in the exhibit for a complete new wired and wireless solution for a customer. This solution the customer wants to discover and manage every component of the network in Airwave, including switches, MCS, APS, and switches.

How many AirWave licenses does the architect need to add?

- A. 30
- B. 222
- C. 7122
- D. 6930

Answer: A

3.An indoor basketball stadium has 5,000 seats in two rings:

- The stadium has a ceiling height of 60 feet (18 m).
- There is a catwalk around the perimeter of the basketball court, between the court and the seating areas.
- This catwalk is 40 feet (12 m) from the floor.

- There are two scoreboards at either end of the stadium.
 - The construction of the stadium is concrete and sleet.
- The customer does not want an under-seat, picoceli deployment.

Which AP model is appropriate to provide coverage in the main stadium bowl?

- A. AP-577
- B. AP-555
- C. AP-575
- D. AP-505

Answer: A

4.A network architect needs to plan quality of service (QoS) for a hospital network.

Which of these applications should receive the highest priority?

- A. streaming IPTV in lobbies
- B. cloud-based scheduling software
- C. MRI image transfer
- D. wireless voice communicator devices

Answer: B

5.Refer to the exhibit.

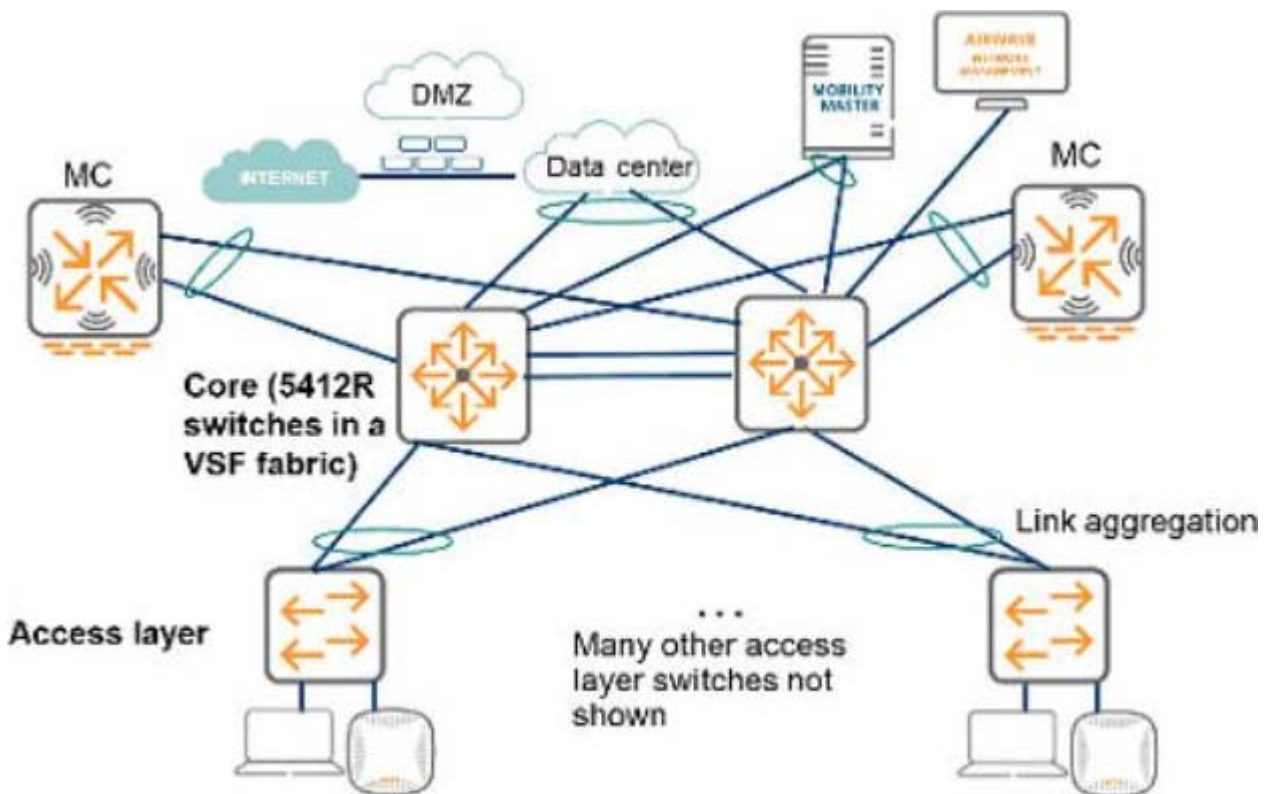


Exhibit: A49.01114316-12

The exhibit shows the design for an existing network. The customer intends to replace the current Core switches with two Aruba 8400 switches.

What are two points that the architect should ensure that the customer understands? (Select two.)

- A. The 8400 switches do not support VSF.

- B. The 8400 switches cannot be monitored by AirWave.
- C. The 8400 switches run different software than the 5400R switches.
- D. The 8400 switches have a smaller ARP table than the 5400R switches.
- E. The 8400 switches are fixed port switches.

Answer: C,D