

T estpassport Q&A



Bessere Qualität , bessere Dienstleistungen!

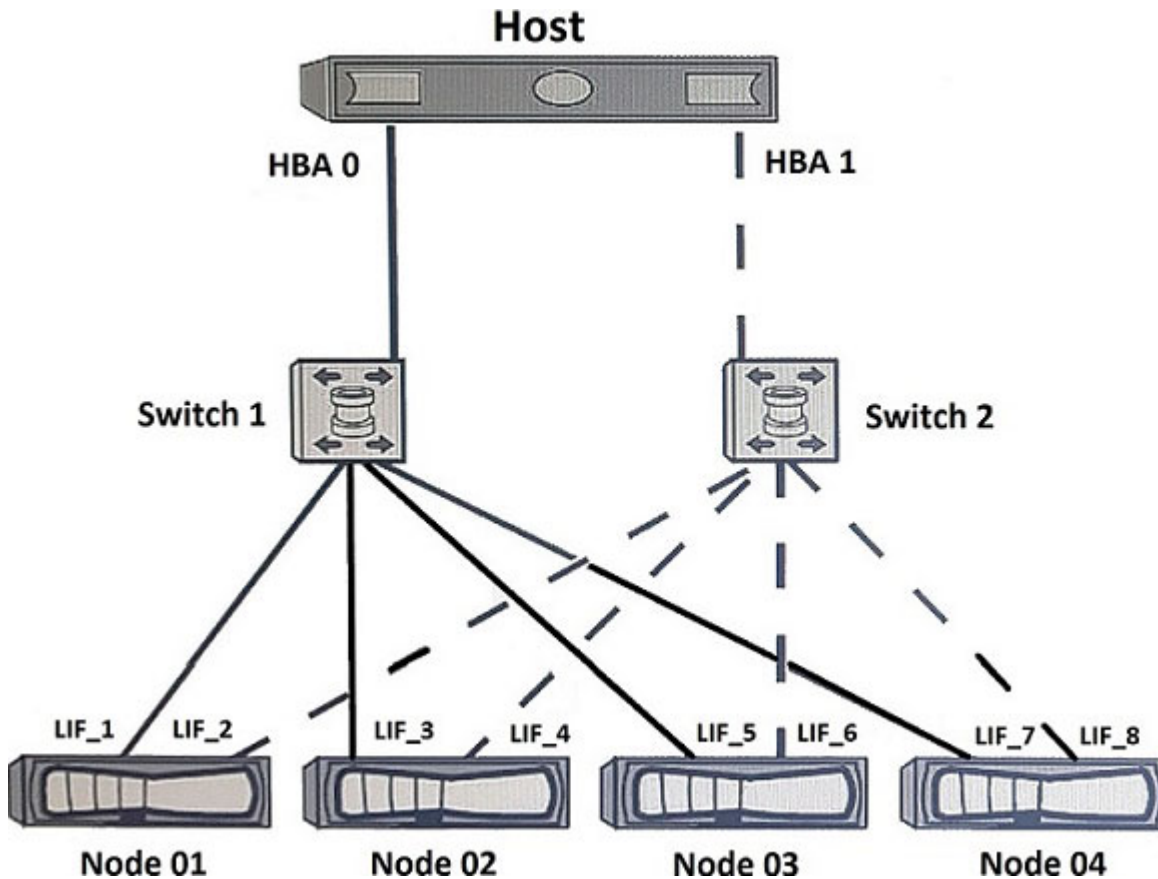
We offer free update service for one year
[Http://www.testpassport.ch](http://www.testpassport.ch)

Exam: **NS0-520**

Title: NetApp Certified
Implementation Engineer -
SAN, ONTAP

Version: DEMO

1.Exhibit.



A customer is testing a dual-fabric FC SAN configuration as shown in the exhibit.

The zones are implemented on the switches shown below.

Switch 1 /Zone 1: HBA 0, LIF_1, LIF_3, LIF_5, and LIF_7

Switch 2 /Zone 2: HBA 1, LIF_2, LIF_4, LIF_6, and LIF_8

IF all the nodes are in the SLM reporting nodes list, how many paths per LUN should the customer expect when simulating a node failure by powering off Node 04?

- A.4 paths
- B.6 paths
- C.8 paths
- D.2 paths

Answer: B

2.You are asked to troubleshoot performance issues in a customer's SAN environment. After reviewing the NetApp SAN and hosts for best practices, you have narrowed down the issues to the fabric switches.

In this scenario, which component should be verified?

- A.F_port config
- B.FLOGI database
- C.loss sig counters
- D.BB_Credit counters

Answer: C

3.Which statement is true about expanding an aggregate from 32-bit to 64-bit in place?

- A.All aggregates are automatically converted from 32-bit to 64-bit with the Data ONTAP 8.1 upgrade.
- B.The expansion is triggered by an aggr convert command.
- C.The expansion is triggered by adding disks to exceed 16 TB.
- D.The 32-bit aggregates are degraded and must be Volume SnapMirrored to a new 64-bit aggregates with Data ONTAP 8.1 upgrade.

Answer: C

4.Exhibit:

```
cl01::>lun resize -vserver  
svm1 -volume db1_vol -lun db1  
-size 4096g
```

```
Error: command failed: New  
size exceeds this LUN's  
initial geometry
```

```
cl01::>
```

What is the reason for the error shown in the exhibit?

- A.The LUN is thin provisioned, but the parent volume is thick provisioned and cannot satisfy the request.
- B.The aggregate over commitment threshold has been exceeded.
- C.The parent volume that contains the LUN is out of space.
- D.The LUN cannot be grown past its maximum resize size.

Answer: D

5.A copy of a LUN was created by using the lun copy command.

To allow the copy to be seen on the same host, what would you do?

- A.Change the serial number of the copied LUN.
- B.Configure SLM on the new node.
- C.Create a new port set.
- D.Map the LUN to the same igroup.

Answer:A